

# #PERMUTATION

## COMOC - F287 - F288



COMOC PROF Armchair

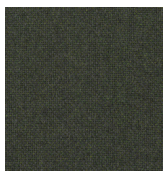
Raw oak, leather or fabric seat / 12 available finishes  
L67 P73 H75 SHHA\*42 cm - ref. F287  
L26,4 P28,7 H29,5 SH\*16,53 inches  
Photo : Cheyenne



COMOC KING Sofa 2 seaters

Raw oak, leather or fabric seat / 12 available finishes  
2 seaters L152 P84 H68 SH\*42 cm - ref. F288 (2S)  
L59,84 P33,07 H26,77 SH\*16,53 inches  
Photo : Comanche (finition supprimée / delisted finish)

ONLY AVAILABLE IN NEW STITCH



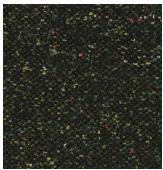
Dark  
Green  
Wool



Cheyenne



Pawnee  
Charcoal



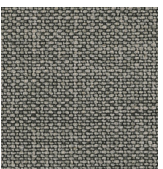
Kaki  
Tweed



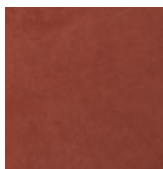
Mohican



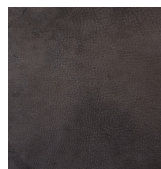
Pawnee Tan



Linen  
Green



Sienna



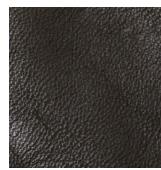
Pawnee  
Tobacco



Linen  
Ecu



Terracotta  
Tweed



Chinook